

SERIES 1000

THERMALLY BROKEN SINGLE SWING DOOR

DESCRIPTION: FULLY THERMALLY BROKEN FRAME AND SLIDER SASH. FULL RAIN SCREEN SYSTEM, 4 1/2" (114 MM) DEPTH WINDOW FRAME. FULLY INTEGRATED WITH NORSTAR 127 SERIES AND 6700 SERIES WINDOW WALL SYSTEM

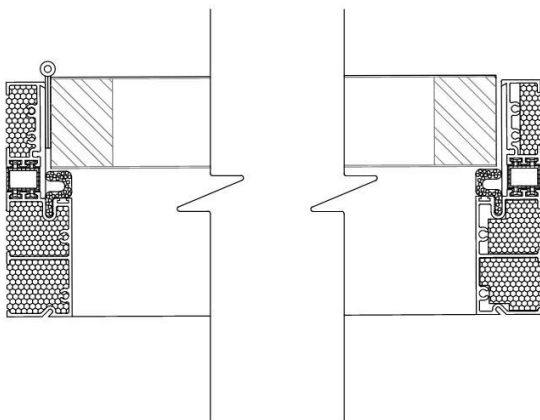
APPLICATION:
IDEAL FOR MULTI RESIDENTIAL HIGH-RISE REPLACEMENT & NEW CONSTRUCTION PROJECTS.

FINISH: EXTERIOR AVAILABLE IN AAMA-2605 PAINT FINISH, STANDARD, CUSTOM COLOURS. INTERIOR FINISH LIMITED ON STANDAR COLOURS.

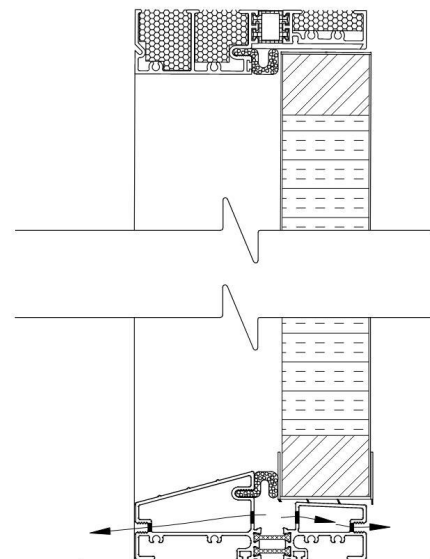
AVAILABLE WIDTH:
30"(762mm), 32"(813mm), 34"(864mm), 36" (914mm)

AVAILABLE HEIGHT:
81" (2057mm) , OPTION FOR TRANSOM

GLAZING:
AVAILABLE IN ALL GLAZING OPTIONS, 1" O/A



(DEPENDING ON INSWING OR OUT SWING, WEEP HOLES ARE ON OPPOSITE SIDE)



Norstar Windows and Doors Ltd.

400 McNeilly Road, Stoney Creek, ON. L8E 5E3

T 905-643-9333 F 905-643-3633 W norstarwindows.com