

NORSTAR

WINDOWS & DOORS LTD.



We are committed to THE BEST PRODUCT, THE BEST SERVICE AND THE BEST VALUE

HIGHRISE • LOWRISE • CONDO • COMMERCIAL • LOFTS • CURTAIN WALL • MANUFACTURING • RAILINGS • SPECIALTY

CORPORATE PROFILE



Stoney Creek, ON

Norstar Windows & Doors was established in 1993 and has quickly grown to become a leader in Aluminum Windows, Doors, Balcony Railings, Curtain Wall and Entrance system. We were the first ISO 9001 certified window company in Ontario.

We are a leading Canadian Manufacturer and Installer specializing in retro-fitting existing buildings and new construction from high & low rise multi residential, corporate high rise, industrial, hotels and commercial plaza.

Over the years, **Norstar** has been committed and focused on ensuring the longevity of our company, through repeat and referral business achieved by customer satisfaction. We continue to maintain the highest levels of professionalism and integrity in our relationships with our suppliers, subcontractor, property owners, property managers and engineers.

Our mission is to build on our history of product excellence and meet the unique needs and expectations of each client. We are committed to deliver **The Best Product, The Best Service and The Best Value.**



Hamilton, ON



Toronto, ON

OUR PRODUCTS

WINDOWS AND DOORS

Norstar Series 6000 window system is *CSA-A440-00 "Windows" and AAMA/WDMA/CSA 101/I.S.2/A440-08 "NAFS North American Fenestration Standard"* to meet the most demanding specifications. Designed for high-rise multi-residential, condos and commercial projects, the series 6000 window system is an attractive product for a wide range of applications. Multiple glazing options provide flexibility to meet specific design requirements. A thermal break in the frame improves thermal performance enhancing energy savings. Our series 6000 window provides the complete solution for your fenestration needs.

ALUMINUM RAILING

Norstar Series 7500 is a certified railing system that meets the *2006 Ontario Building Code*. Our new modern designs combine the latest in technology, safety and style. A well-designed railing system enhances the style of the building while offering unsurpassed safety. All of our railing products are designed from 6063-T6 heat strengthened aluminum alloy. All of our railings are factory powder-coated meeting AAMA 2605 specifications.



Ottawa, ON



Mississauga, ON



Toronto, ON



Brampton, ON

CURTAIN WALLS

Norstar Series 8000 curtain wall system meets *CSA-A440* requirements. Our series 8000 is the benchmark for value and performance in a pressure wall system. It is offered in a range of system depth and face covers to meet any design specification. The curtain wall is the most airtight and weather resistant cladding and exterior wall system available. The aluminum curtain wall system is found in city centres on many new buildings throughout Canada.

ENTRANCES AND FRAMING

Norstar Series 2500 is a heavy duty thermally-broken aluminum frame with fixed insulated thermal unit. All doors are in narrow, medium and heavy duty styles complete with tempered thermal glass, continuous hinge, glazing spline, back to back pull handles, threshold, sweep and Dorma closer.

Norstar Series 1450 is a heavy duty aluminum frame with fixed single glazing. All doors are standard narrow style complete with tempered single glass, continuous hinge, glazing spline, back to back pull handles, threshold, Dorma closer, MS Lock, paddle activator and electric strike.

ALUMINUM WINDOWS SERIES 6000

Our Series 6000 is CSA-A440-00 “Windows” and AAMA/WDMA/CSA 101/I.S.2/A440-08 “NAFS North American Fenestration Standard” to meet the latest requirements of the Ontario Building Code and National Building Code. Full test reports available upon request. Our series 6000 is available in virtually any colour and finish.

FRAME CONSTRUCTION

The frames have a depth of 4 5/8” (5” available) and are constructed of 6063-T6 aluminum alloy. The nominal material wall thickness for the frame is .062”. The sill height is increased to allow for better water drainage. Corners are fastened with screws and sealed.

SASH FRAME CONSTRUCTION

The sash consists of aluminum profiles with .062” nominal material wall thickness of 6063-T6 alloy. Corners are fastened with screws and sealed. Cam sash design and continuous interlock at the sash meeting rail offer superior weathering and structural performance. OPTIONAL interior thermal sliders available.

WEATHER STRIPPING

The exterior set of sash is weather-stripped with pile weather stripping. The interior set of sash is weather-stripped with fin weather stripping.

SCREENS

Half screens are inserted within the window frame assembly. The mesh screens are standard in fibreglass. Aluminum mesh is available upon request.

THERMAL BARRIER

Head, jamb and sills are thermally broken using the latest in thermal breaks. A vinyl thermal break is inserted between the interior and exterior extrusion and then mechanically crimped. New ISO Bar is also available to provide higher thermal and structural performance.

HARDWARE

Spring loaded lock at sash meeting rail locks window into place. The sash glides on steel ball bearing rollers over a raised sill track ensuring smooth operation and minimizing the effects of debris and dirt build up on the sill.

GLAZING

Thermal glass units are glazed with Tremco Polyshim II glazing tape. Windows are inside glazed with an extruded vinyl stop. Extruded aluminum stop available upon request. Standard glazing is 15/16” sealed insulated glass, or upgrade to Low-E coated glass and argon gas for greater energy performance and condensation resistance in cold climates. Glass can also be supplied colour tinted or reflective to meet all custom architectural specifications.



Ancaster, ON



Hamilton, ON



Hamilton, ON



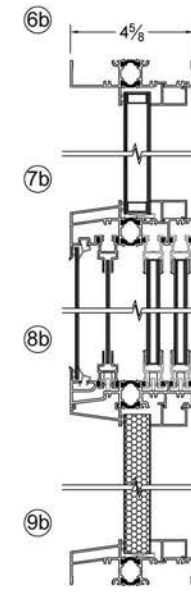
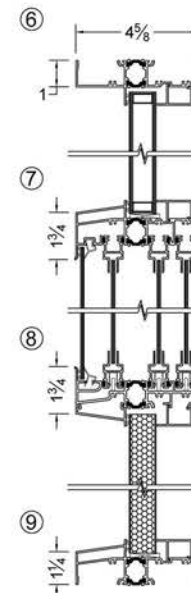
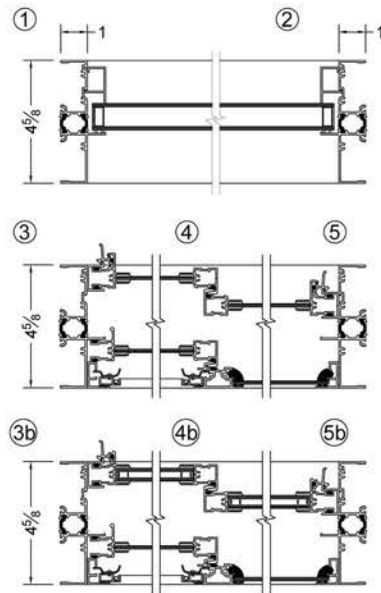
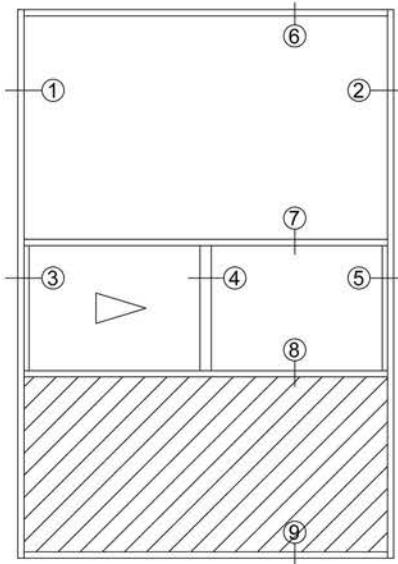
Kitchener, ON



Toronto, ON



Woodstock Hall - Hamilton, ON



ALUMINUM SLIDING PATIO DOORS SERIES 1200

Our Series 1200 meets the CAN/CGSB 82.1-M89 "Sliding Glass Door". Doors can be configured up to 6 panels wide in the same perimeter frame in any combination of fixed and operable panels. Transoms and sidelites are also available to complete the design. Our Series 1200 is available in virtually any colour.

FRAME CONSTRUCTION

The frames have a depth of 4 1/2" and are constructed of 6063-T6 aluminum alloy. The nominal material wall thickness for the frame is .062". Mill finish is standard but available in clear anodized finish.

SASH FRAME CONSTRUCTION

The sash/slider is a double structural thermal barrier in all framing sections minimizes heat flow and condensation and eliminates the thermal bridging that occurs in single thermal break products.

SCREENS

Adjustable screen rollers in the top and bottom of the screen frame provide smooth operation of the screen without tipping or binding. The screen interlocks with the door panel to create seamless protection against insects. The mesh screens are standard in fibreglass. Aluminum mesh is available upon request.

HARDWARE

A range of fully adjustable lock sets and handles are available to satisfy all tastes and budgets. For added protection optional security bars, key locks and anti-lift blocks are available. Doors roll quietly and smoothly on adjustable tandem steel ball bearing rollers. Panels are independently adjustable to achieve the utmost in ease of operation and protection against the elements.

GLAZING

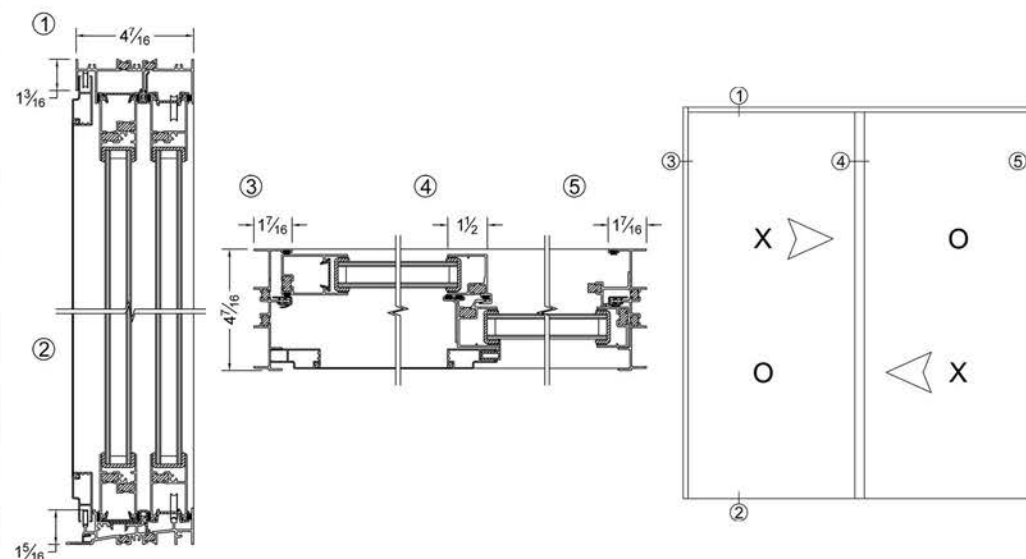
Standard glazing is 1" clear tempered sealed insulated glass, or upgrade to Low-E coated glass and argon gas for greater energy performance and condensation resistance in cold climates. Glass can also be supplied colour tinted or reflective to meet all custom architectural specifications.



Toronto, ON



Toronto, ON



STEEL INSULATED DOORS SERIES 1000

Our Series 1000 meets the CAN/CGSB 82.5-M88 "Swing Door" standard. Our Series 1000 combines a thermally-broken aluminum frame with a steel-insulated door slab. This maintenance-free product offers optimum energy and cost efficiency. Our Series 1000 is available in virtually any colour.

FRAME CONSTRUCTION

The aluminum frame is 4 5/8" deep with the exterior section separated from the interior section with a vinyl extruded thermal break. The frames are constructed of 6063-T6 aluminum alloy. The nominal material wall thickness for the frame is .062". Mill finish sill is standard but available in clear anodized finish.

STEEL INSULATED DOOR

Door panels are constructed of factory primed white, hot-dipped galvanized 24-gauge steel surface permanently bonded to a rigid injection polyurethane core and crimped around grooved wood stiles and rails. The 1 3/4" panels has an R Value of 14.6.

TRANSOMS

Transoms are manufactured using a continuous jamb and may incorporate a sealed insulated thermal unit or insulated metal panel.

DOOR LITE GLASS

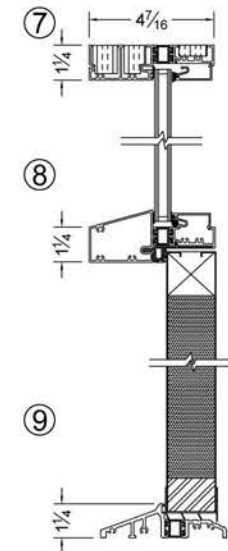
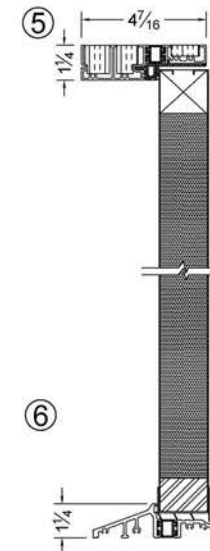
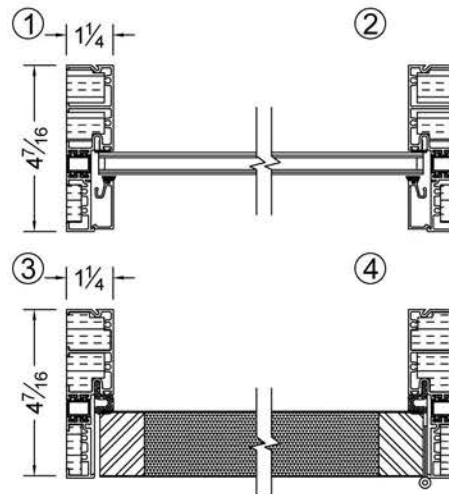
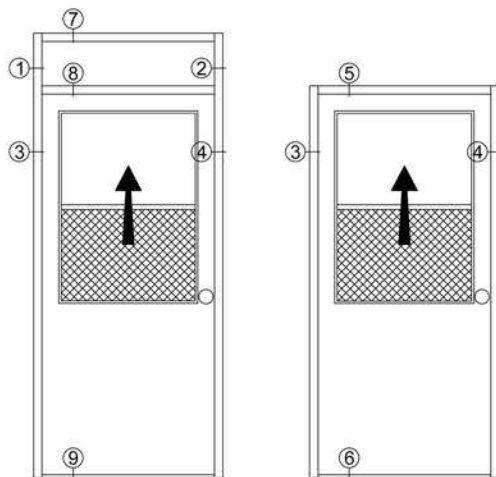
A variety of vinyl-frame glass inserts can be incorporated into the door slab. These glass inserts are available in various sizes including full, three quarters and half lites. The lites/inserts can also be operable or fixed.



Toronto, ON



Barrie, ON



ALUMINUM BALCONY RAILINGS SERIES 7500

Our Series 7500 railings meet the Ontario Building Code (OBC), 2006 Edition 4.1.5.15 (1). Manufacturing and installation of guardrails and their components shall be in accordance with the engineer shop drawings provided on the project. All railings are custom fabricated for each project to meet the project specifications.

FRAME CONSTRUCTION

Extruded aluminum posts are 6005-T6 alloy. All other members are 6063-T6 alloy. Expansion anchors are stainless steel with epoxy adhesive. All exposed and hidden fasteners are stainless steel.

FINISH

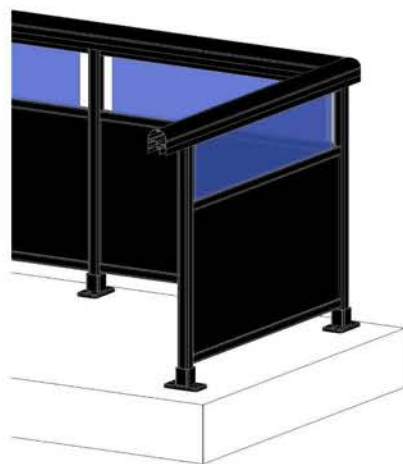
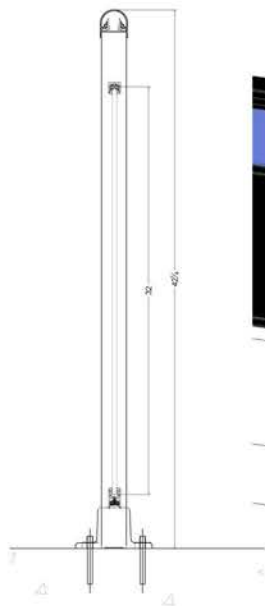
Colour (Glass & Aluminum) to be selected by the client. The finish is polyester powder coated electrostatically applied and baked to AAMA-2605 specification.

GLASS

All glass is 6mm (1/4") tempered in compliance with CAN/CGSB-12.1-M90.



Barrie, ON



SPLIT GLASS & PANEL



GLASS



PICKETS



ALUMINUM PANELS



Burlington, ON



Ottawa, ON



Woodbridge, ON

CURTAIN WALL SERIES 8000

Our Series 8000 meets CSA-A440-00 requirements. It is designed based on the “Open Rain Screen” and “Pressure Equalization” principals. The curtain wall is available in 2” or 2 1/2” wide thermally broken wall systems with mullion back section sizes from 1” to 6” deep. Also available is a 2” or 2 1/2” wide, two sided, structural silicone glazed thermally broken wall system.

FRAME CONSTRUCTION

All extruded aluminum sections are 6063-T6 alloy or equivalent. Frame profiles (back sections) sizes are available from 1” to 6”. The curtain wall system is thermally broken.

GLAZING

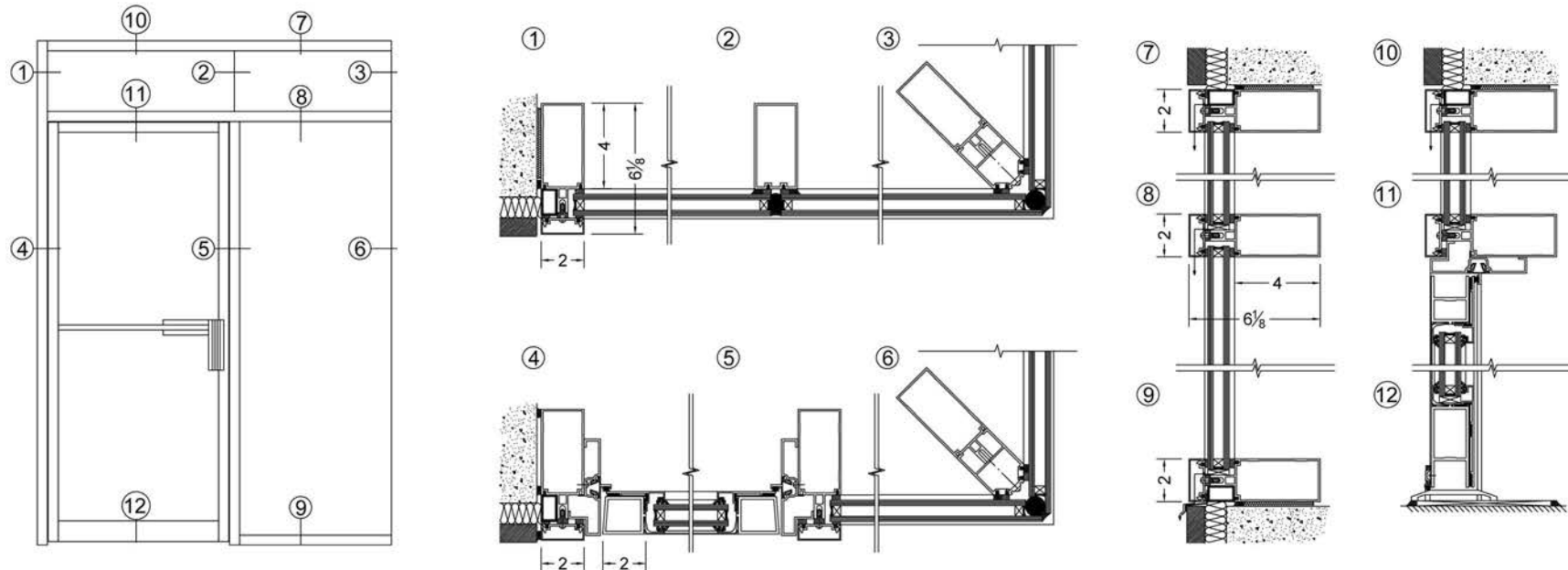
Standard glazing is 1” clear sealed insulated glass, or upgrade to Low-E coated glass and argon gas for greater energy performance and condensation resistance in cold climates. Glass can also be colour tinted or reflective to meet all custom architectural specifications.

FINISH

Anodic Oxide Treatments (#17 clear anodized standard) are in accordance with AAMA designations. Our series 8000 is available in virtually any colour and finish.



Stoney Creek, ON





Brampton, ON



Oakville, ON



Toronto, ON

CUSTOM ENTRANCES AND FRAMING SERIES 1450 + 2500

Our Series 2500 is a 4 1/2" deep frame extruded in 6063-T6 alloy, thermally broken. Our Series 1450 is a 4 1/2" deep frame extruded in 6063-T6 alloy, non-thermally broken.

ALUMINUM DOORS

Extruded welded aluminum profiles are installed into either the 2500 or 1450 series framing in either our standard "Narrow", "Medium" or "Wide" style doors. Various options on hardware are available.

GLAZING

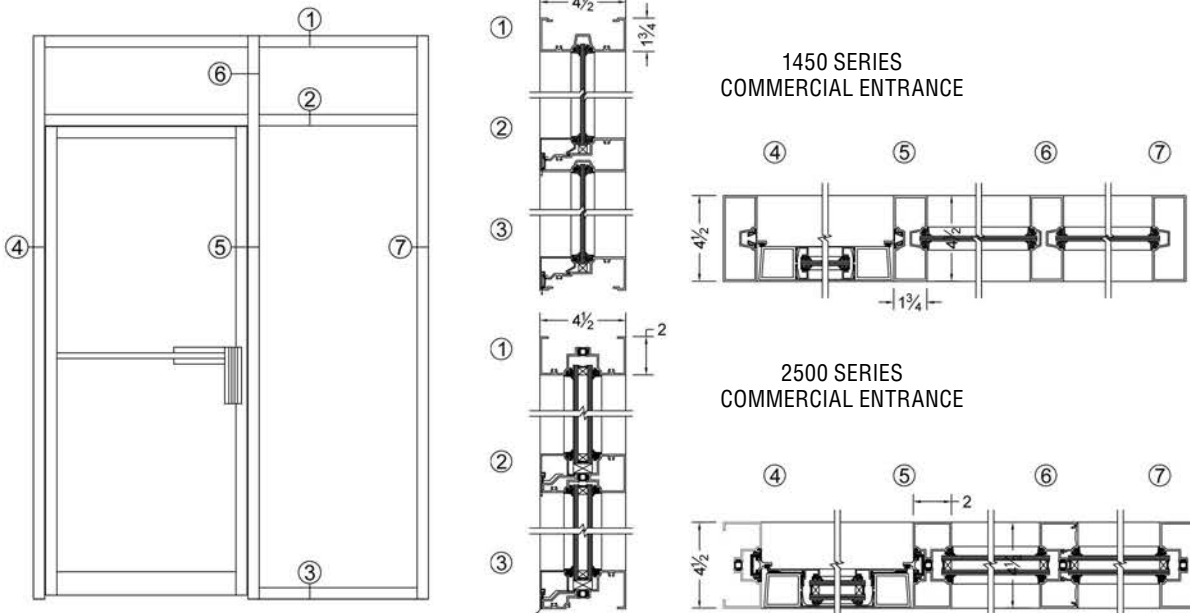
Standard glazing is 1" Tempered clear sealed insulated glass (2500 Series) and 1/4" clear tempered glass (1450 Series). These can be upgraded to Low-E coated glass and argon gas for greater energy performance and condensation resistance in cold climates. Glass can also be colour tinted or reflective to meet all custom architectural specifications.

FINISH

Anodic Oxide Treatments (#17 clear anodized standard) are in accordance with AAMA designations. Our series 1450 & 2500 are available in virtually any colour and finish.



Brampton, ON



Ancaster, ON

VINYL WINDOW SERIES 1500



NORSTAR CASEMENT WINDOWS (100M)

Casement Window Ratings

CAN/CSA A440 F2, A3, B7,C5

Energy Rating of +28*

U value .28 with SHGC .26*

Meets CSA Requirements • Window Wise Approved

AAMA/WDMA/CSA101/1.5.2/

A440-05 C-C55 FER10

NFRC Certified • ENERGY STAR Qualified

100M Premium Casement

Widths: 12" - 36" Heights: 16" - 76"

14" Height Minimum with single point Lock

Maximum with Triple or Keepsafe

Widths: 28" Heights: 66"

* Tested with Low E, Argon Gas and a warm edge spacer



NORSTAR AWNING WINDOWS (150M)

Awning Window Ratings

CAN/CSA A440 F2, A3, B7,C5

Energy Rating of +28*

U value .28 with SHGC .26*

Meets CSA Requirements • Window Wise Approved

AAMA/WDMA/CSA101/1.5.2/

A440-05 C-C55 FER10

NFRC Certified • ENERGY STAR Qualified

150M Premium Awning

Widths: 19 3/4" - 48" Heights: 16" - 48"

14" Height Minimum with single point Lock

Maximum with Triple or Keepsafe

Widths: 28" Heights: 66"

* Tested with Low E, Argon Gas and a warm edge spacer

Our Series 1500 have been created to offer high performance, energy efficient windows, all with a lifetime warranty on the frame and sash material, hardware and insulating glass.

These windows have been made to meet the most modern requirements of CSA testing and are available to meet the most rigorous requirements of the ENERGY STAR program in all regions of Canada.





NORSTAR DOUBLE-SINGLE HUNG (210C/201VS)

Double Hung Window Ratings

CSA A440-00: A3, B7, C3, F10, S1
 AAMA/NWWDA 101/I.S.2-97 (DH-R*40 FER20)
 Energy Rating of +29*
 U value of 0.29*

Energy rating of: +36 • U value: .25
 (Triple glazed with Low E and Krypton Gas
 and a warm edge spacer)

Meets CSA Requirements
 ENERGY STAR Qualified
 Window Wise Certified

210C Double Hung Size Limitations

Width: Min 15" Max 48"

Height: Min 22" Max 80"

Maximum size with Triple Glass or Keepsafe is 18 sq. ft.

* Tested with Low E, Argon Gas and a warm edge spacer

Single Hung Window Ratings

AAMA/WDMA/CSA101 I.S.2/A440-05 - H-C55** FER10
 CSA A440-00: A3/Fixed, B3, C3, F10, S1
 Energy Rating of +31* • U value 0.28*
 Meets CSA Requirements • NFRC Certified
 Energy Star Qualified • AAMA Certified
 Window Wise Certified

201VS Single Hung Size Limitations

Width: Min 15" Max 48"

Height: Min 18" Max 80"

Minimum width 12" if height is > 27 1/2"

Maximum size with Triple Glass or Keepsafe is 18 sq. ft.

* Tested with Low E, Argon Gas and a warm edge spacer



Toronto, ON



NORSTAR DOUBLE-SINGLE SLIDER (300/301VS/301VSJ)

Double Slider Window Ratings

CSA A440 - M98 - A2, B3, C3, F20, S1
 Energy Rating: +28* • U Value: 0.29*
 ENERGY STAR Qualified
 Window Wise Certified

300 Double Slider Size Limitations

Widths: 22" - 72" Heights: 12" - 50"

Combination Units

Widths: 54" maximum

Triple or Keepsafe Glass

Maximum size is 18 sq. ft.

* Tested with Low E, Argon Gas and a warm edge spacer

Single Slider Window Ratings

CCSA A440 - M98 - A3/Fixed, B2, C3, F10, S2
 Energy Star Rating of +31* • U value 0.28*
 Meets CSA Requirements • NFRC Certified
 Energy Star Qualified • Window Wise Certified

301VS/301VSJ Single Tilt Slider

Width: Min 18" Max 72"

Height: Min 12" Max 50"

Note: If Height is between 12" and 13", width can be no less than 22"

Maximum size with Triple Glass or Keepsafe is 18 sq. ft.

* Tested with Low E, Argon Gas and a warm edge spacer



Oakville, ON



Kitchener, ON



Toronto, ON



Hamilton, ON



Ancaster, ON



944 SOUTH SERVICE ROAD • STONEY CREEK, ON • L8E 6A2 • T: 1 (905) 643-9333 1-800-363-4810 • F: 1 (905) 643-3633 • www.norstarwindows.com